

Head Office:

1 Penn Court
Station Road
West Moors
Dorset
BH22 0JJ

Tel: 01202 877511

Email: info@dorsetparkhomes.com

DORSET PARK HOMES



Organford Manor Country Park



Organford, Poole, Dorset. BH16 6ES

**A Collection of 5 Luxury Park Homes
on a wonderful 'Gated' Residential Park**

**Organford
Manor Country
Park**

A Wonderful, Gated Residential Development

Set between the historic town of Poole & Wareham, this exclusive Residential Park Home development is the flagship park of site owners Residential Park Homes, who have created a high quality estate of bungalow style properties for the over 45's. Substantial works has gone into the design and infrastructure of this park which is accessed via secure electric gate.

This small development of only 5 quality homes, having a spacious plot & some with the option of a maintenance free deck system. All plots have 'on-plot' parking and ample visitor parking has been allocated. Set in an area of green fields, the has a large fenced dog walking area.

- **Full Residential Licence—essential for all year living**
- **Pet Friendly—simple conditions apply—please enquire for more information**
- **Parking—'On-Plot' —no commercial vehicles**
- **Internet Access: BT 'Openreach' is ready to connect to each property**
- **Council Tax Band 'A'**
- **Age Restriction 45 plus**
- **Pitch Fee £65.68 per week including water & sewerage**



Home Exchange Scheme & Assisted Move Available

Subject to terms & conditions

A five star Residential high quality development, setting the standard for Park Home developments. Easy access to the countryside, Wareham Forest and the stunning Dorset coast making Organford Manor Country Park an ideal location. All homes will be energy efficient, come with an outstanding specification and complete with landscape plot.

Various Park Home sizes are available, all homes are built to residential British standard, ensuring quality control and build specification and will have a 10 year structural warranty, for peace of mind.

Viewing by Appointment Only

Telephone: 01202 877511





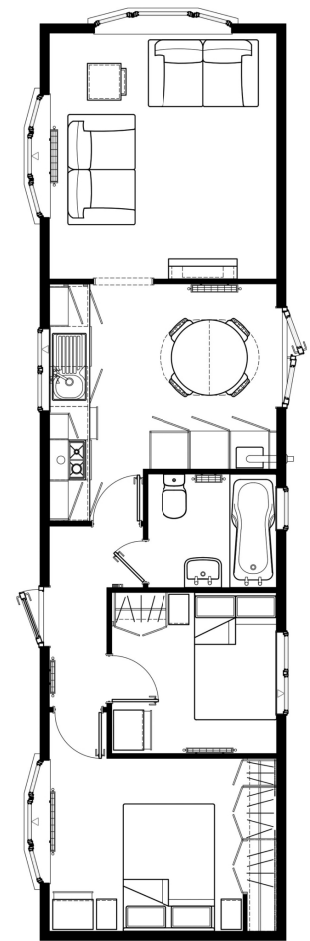
Omar Middleton 50' x 13'

- Superb Kitchen/Diner with integrated appliances
- Large Lounge
- 2 Double Bedrooms
- Luxury Shower Room
- Gas Central Heating & Double-Glazing
- Fully Furnished
- Large Raised Deck

Price £229,950



This drawing has been prepared for diagrammatic purposes only. Not to scale

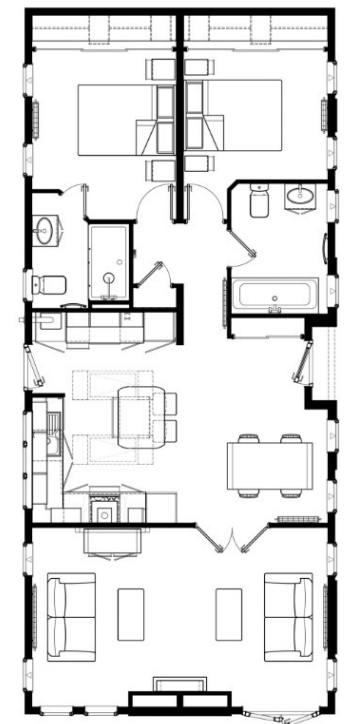
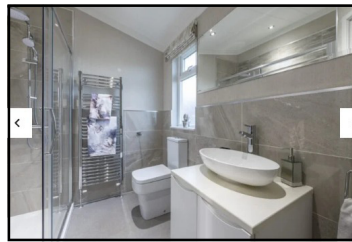
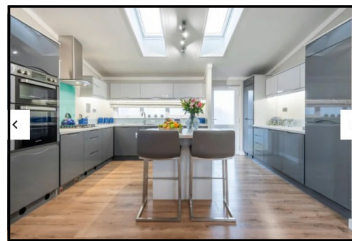


Stylish Interior Designs & Fully Furnished



Omar Ikon 46' x 20'

- Spacious Lounge
- Stunning Kitchen/Diner with Integrated appliances
- 2 Double Bedrooms
- En-Suite Shower Room
- Luxury Bathroom
- Gas Central Heating & Double-Glazing
- Parking on Plot



This drawing has been prepared for diagrammatic purposes only. Not to scale

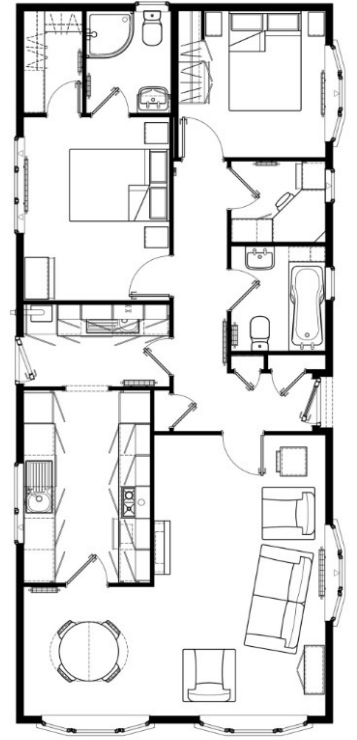
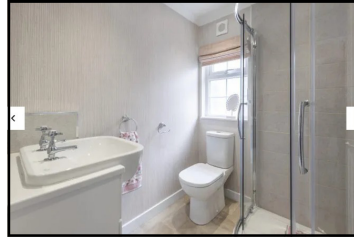
SOLD

IMPORTANT NOTE: These particulars are believed to be correct but their accuracy is not guaranteed. They do not form part of any contract. Nothing in these particulars shall be deemed to be a statement that the property is in good structural condition or otherwise, nor that any of the services, appliances, equipment or facilities are in good working order or have been tested. Purchasers should satisfy themselves on such matters prior to purchase.



Omar Middleton 45' x 20'

- Hall
- Superb Kitchen - including appliances
- Utility Room
- Lounge/Dining Room
- 2 Double Bedrooms (Bedroom 1 with walk-in wardrobe)
- En-Suite Shower Room
- Bathroom
- Parking on Plot



SOLD

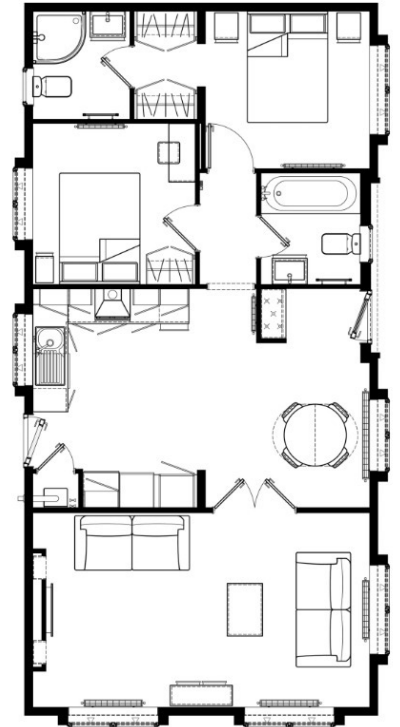
This drawing has been prepared for diagrammatic purposes only. Not to scale

Stylish Interior Designs & Fully Furnished



Omar Image 40' x 20'

- Hall
- Spacious Lounge
- Kitchen/Diner—Integrated appliances
- 2 Double Bedrooms
- En-Suite Shower Room
- Luxury Bathroom
- Gas Central Heating & Double-Glazing
- Parking on Plot



Price £ 279,500

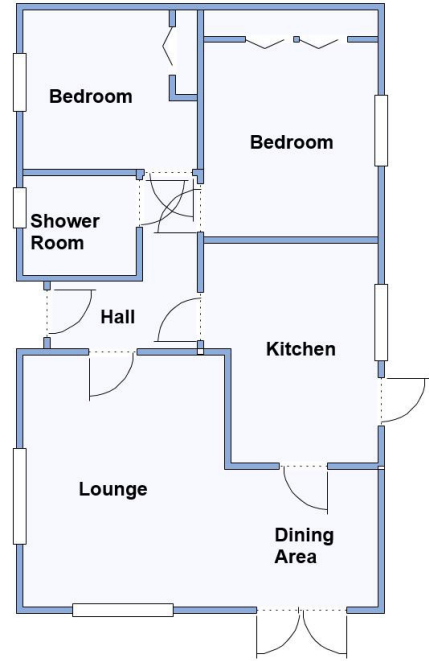
SOLD

This drawing has been prepared for diagrammatic purposes only. Not to scale

IMPORTANT NOTE: These particulars are believed to be correct but their accuracy is not guaranteed. They do not form part of any contract. Nothing in these particulars shall be deemed to be a statement that the property is in good structural condition or otherwise, nor that any of the services, appliances, equipment or facilities are in good working order or have been tested. Purchasers should satisfy themselves on such matters prior to purchase.



Omar Regency 32' x 20'

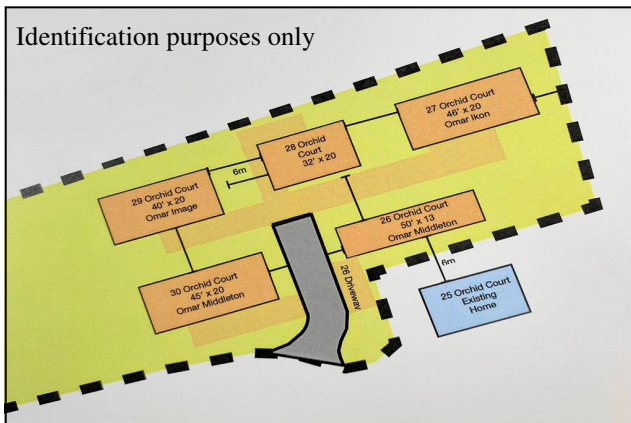


- Hall
- Superb Kitchen - including appliances
- Lounge/Dining Room
- 2 Double Bedrooms with fitted wardrobes
- Shower Room
- Fully Furnished
- Parking on Plot
- Ready for Early Occupation!

Price: £224,950

This drawing has been prepared for diagrammatic purposes only. Not to scale

Stylish Interior Designs & Fully Furnished



IMPORTANT NOTE: These particulars are believed to be correct but their accuracy is not guaranteed. They do not form part of any contract. Nothing in these particulars shall be deemed to be a statement that the property is in good structural condition or otherwise, nor that any of the services, appliances, equipment or facilities are in good working order or have been tested. Purchasers should satisfy themselves on such matters prior to purchase.